

USB Driver Installation Guide

Bhargavi Nisarga

MSP430

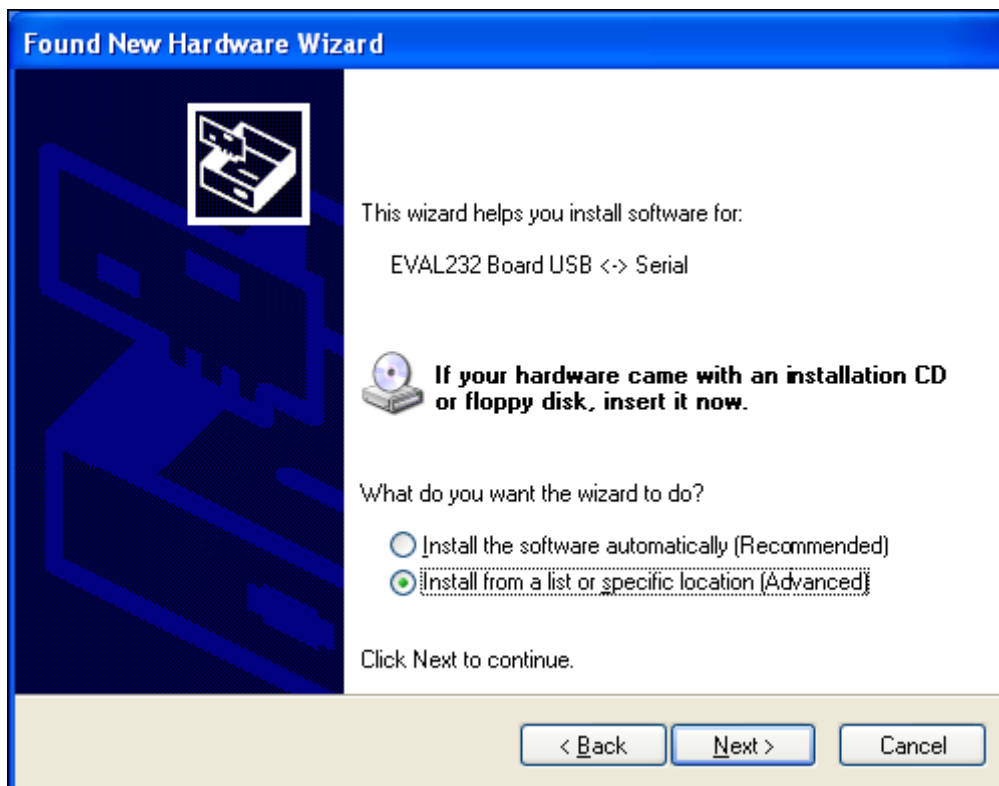
This document shows how to install the USB device on the pulsoximeter demo board under Windows XP. Basically, the procedures are also somewhat the same for other Windows operating systems.

Driver Installation Guide for FT232BM USB Decice under Windows XP:

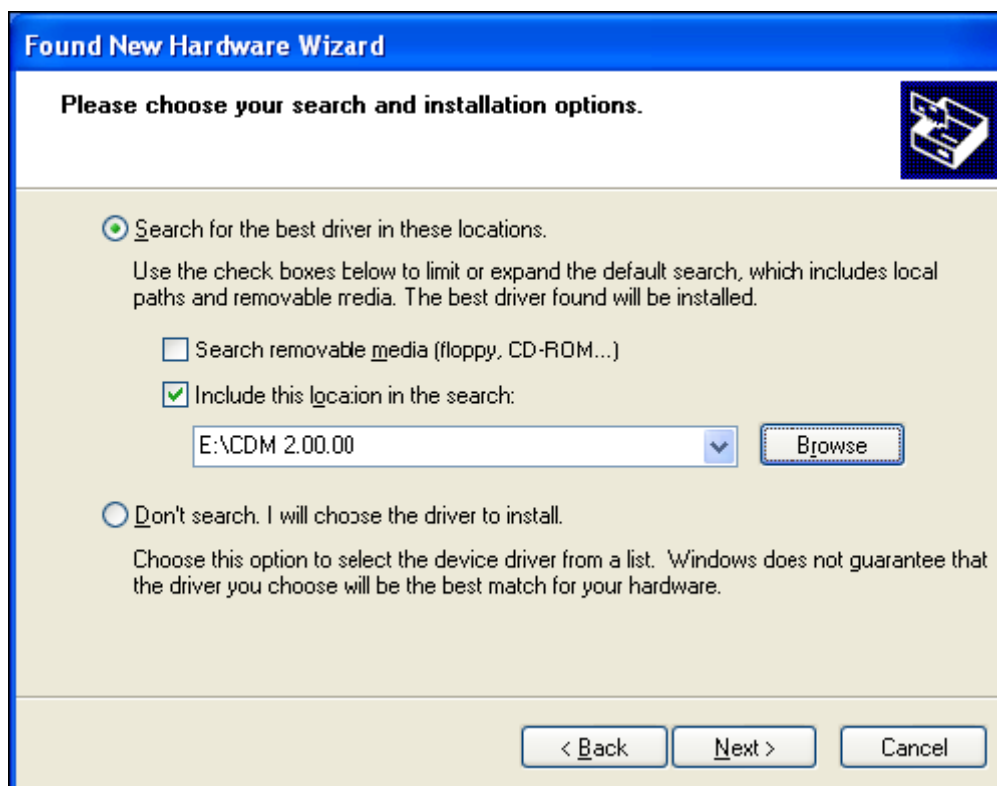
1. Download the driver files from the folder path <Revised Pulsoximeter Application/USB Drivers> and unzip them to a location on your PC.
2. Connect the device to a spare USB port on your PC via a USB cable. Windows will detect the new device and will initiate the Found New Hardware Wizard prompting the user to install the software for the detected USB Device. Select "No, not this time" from the options available and then click "Next" to proceed with the installation.



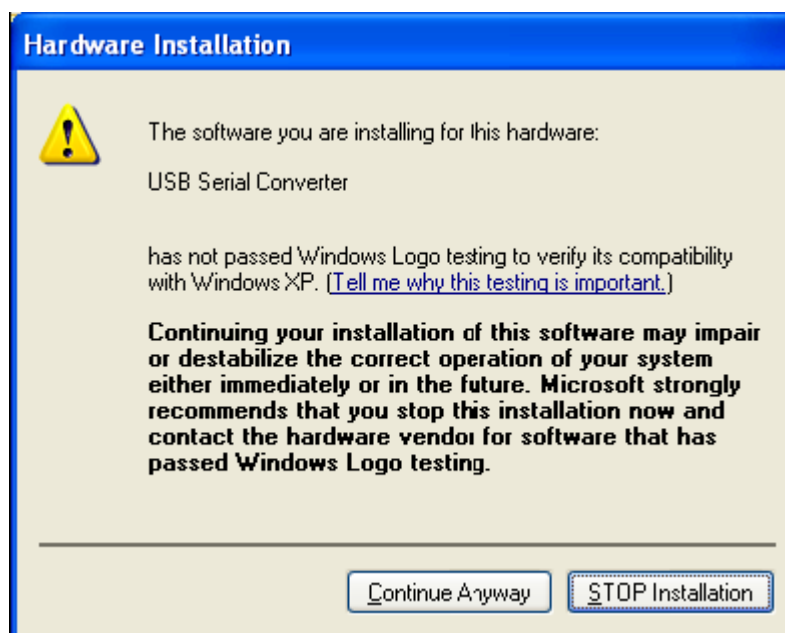
3. Select "Install from a list or specific location (Advanced)" as shown below and then click "Next".



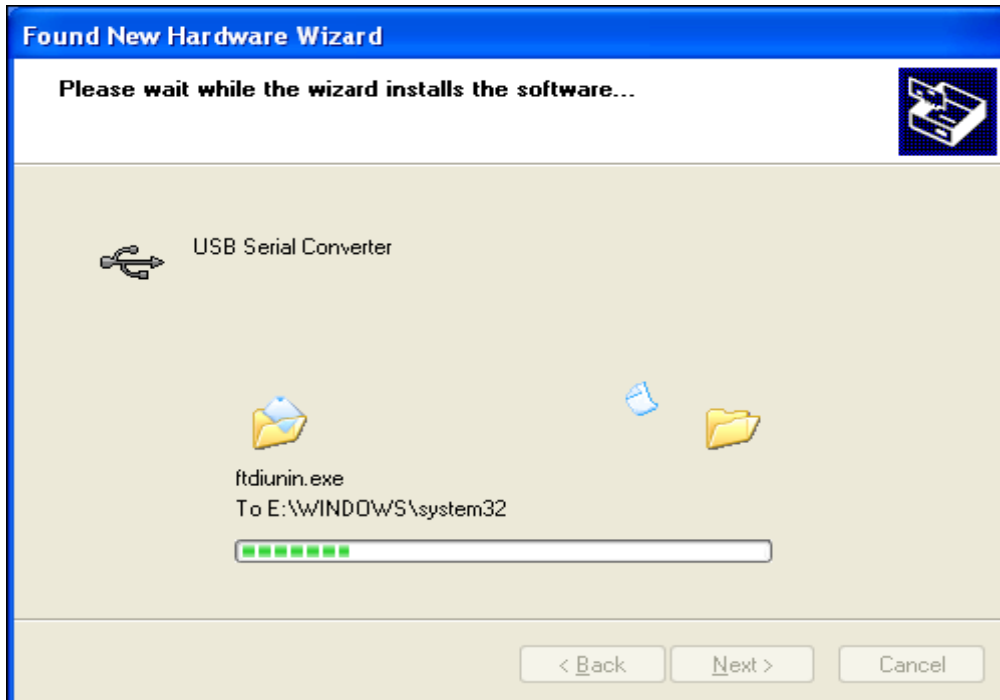
4. Select "Search for the best driver in these locations" and enter the file path in the combo-box ("E:\CDM 2.00.00" in the example below) or browse to it by clicking the browse button. Once the file path has been entered in the box, click next to proceed.



5. If Windows XP is configured to warn when unsigned (non-WHQL certified) drivers are about to be installed, the following screen will be displayed unless installing a Microsoft WHQL certified driver. Click on "Continue Anyway" to continue with the installation. If Windows XP is configured to ignore file signature warnings, no message will appear.



6. The following screen will be displayed as Windows XP copies the required driver files.

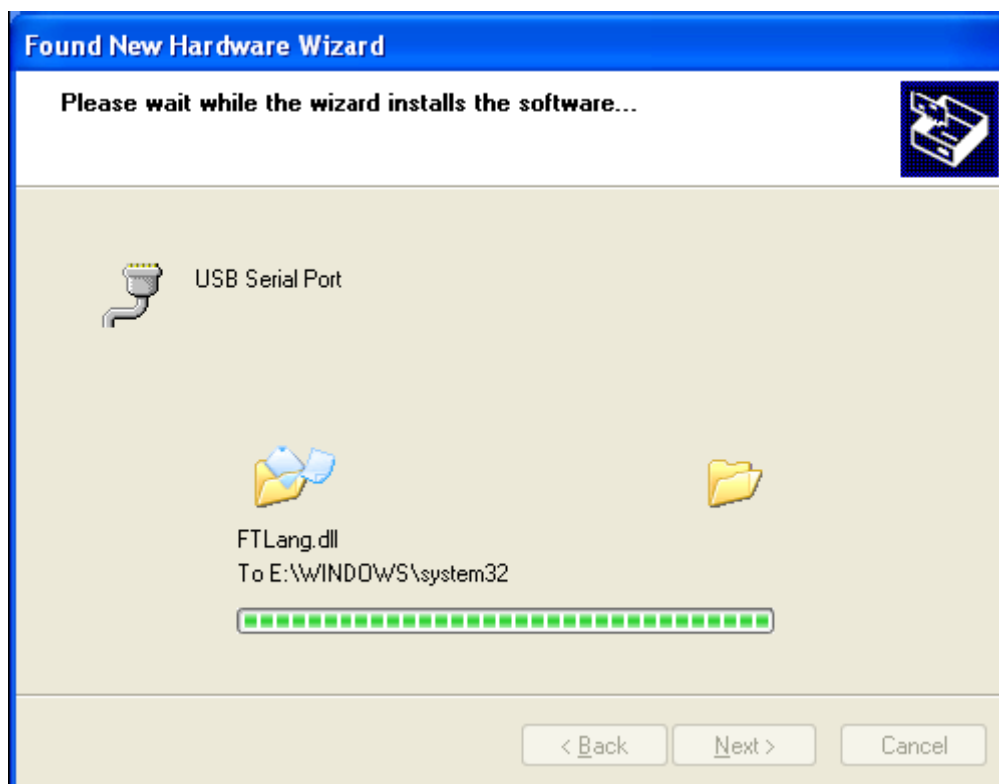


7. Windows should then display a message indicating that the installation was successful. Click "Finish" to complete the installation for the first port of the device.

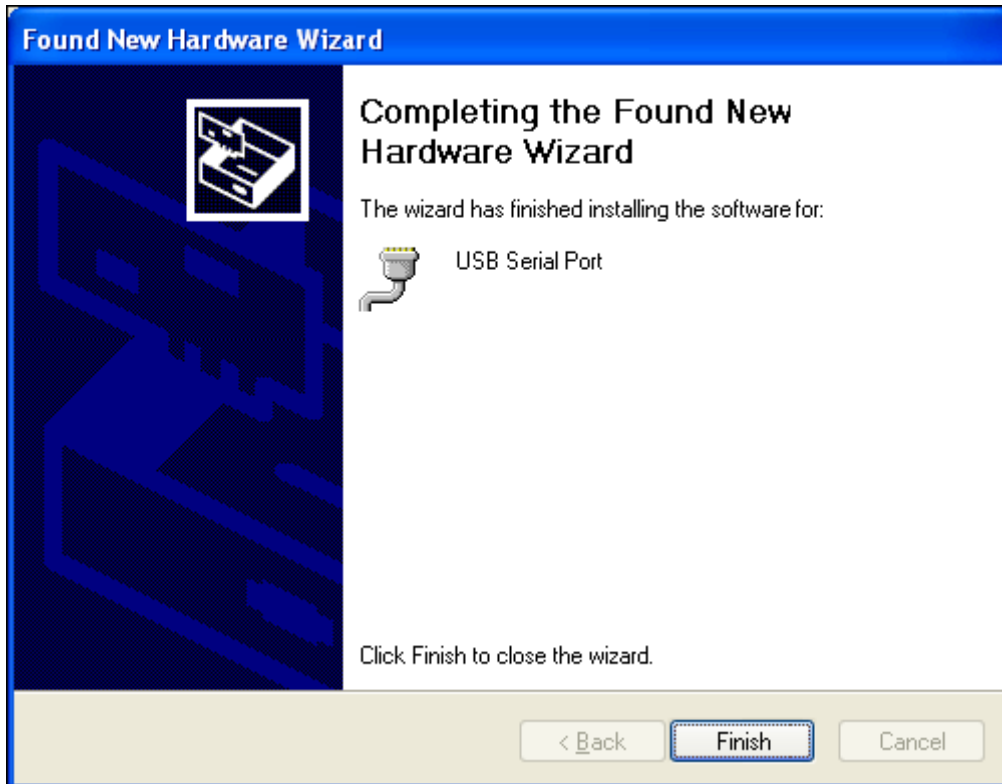


Next the COM port emulation driver is loaded as indicated in the following steps:

8. The Found New Hardware Wizard will launch automatically to install the COM port emulation drivers. Repeat steps 2 to 5.
9. After Step 5 is repeated, the following screen will be displayed as Windows XP copies the required driver files.



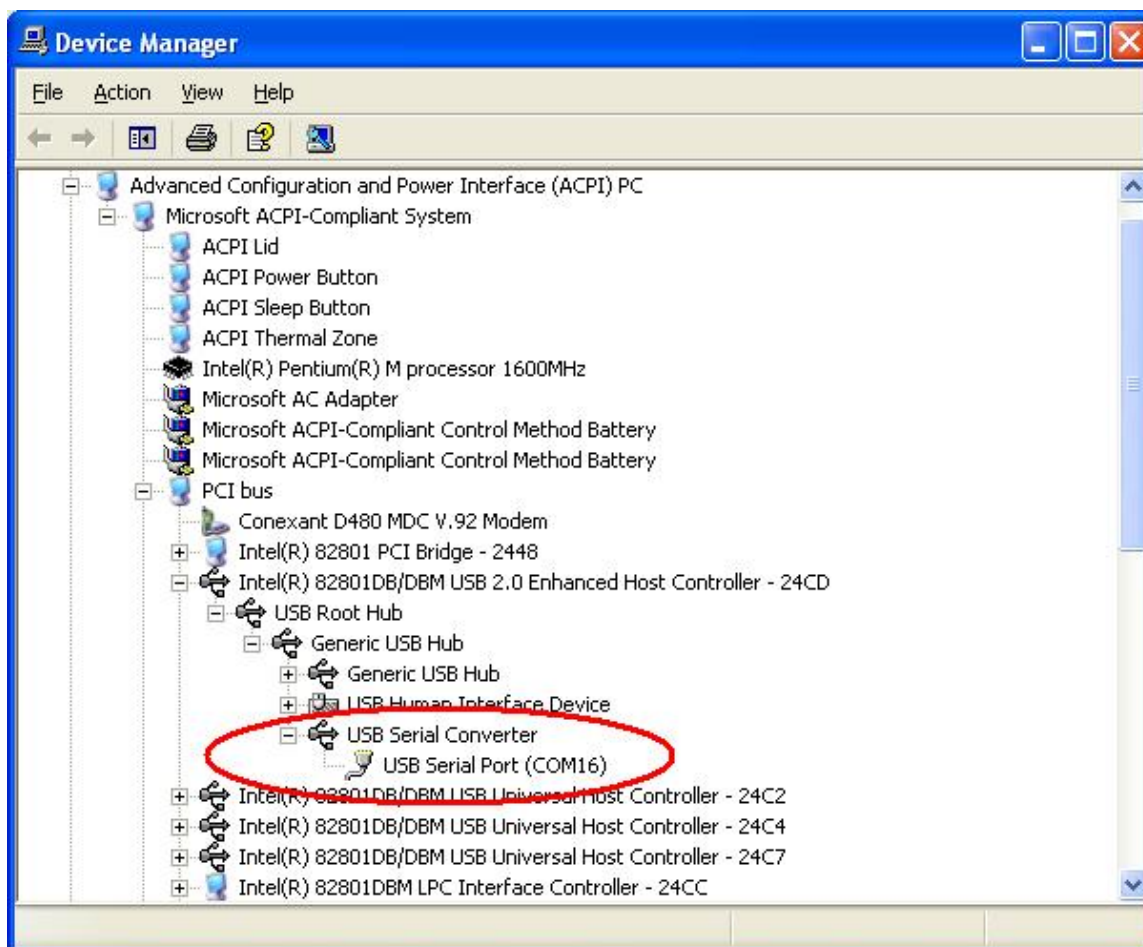
10. Windows should then display a message indicating that the installation was successful. Click "Finish" to complete the installation for the first port of the device.



Verifying the Installation

This section discusses how to verify if the USB to Serial port was properly installed. For this, the COM port assignment made by Windows for the USB to Serial port is to be determined.

To verify if the device is properly installed and determine the COM port assignment of the device - Open the Device Manager (located in "Control Panel\System") then select the "Hardware" tab and click "Device Manager") and select "View > Devices by Connection", the device appears as a "USB Serial Converter" with an additional COM port with the label "USB Serial Port".



NOTE: The COM port assignment of the USB to Serial port varies depending on the computer hardware configuration. Windows will check what COM port are unused or free in the target PC and assigns that port number to the device.

Once you have verified the device to be properly installed, you may now proceed to using the USB to transfer serial data to target PC.